



Bench Control Process Trainer BCT-002

Fully self-contained process controller bench for teaching and simulate a variety of process like level, flow, temperature and pressure.

Permit apprentices to learn, understand and apply different control process loop. I.E. Level and pressure differential.

BCT-002

- Fully self-contained bench process
- Contains 4 different process controller all in one unit
- No need for external air compressor and liquid reservoir
- Include HMI and PLC for monitoring the 4 basic control process
- Perfect for College, University degree learning
- Demonstrate flow, level, temperature and pressure control feedback through a monitoring screen HMI
- Quality equipment at the best competitive price on the market

Teaching objectives

- To learn the behavior of process control system.
- To learn the different type of loops, open, cascade or feedback system.
- To learn the steadiness and precision of the controller under disturbances and consistency



General Specifications

Dimensions:

- Bench Trainer: 48'' x 66.5'' x 24''

Weight:

- Approx. 220 lbs.

Clear Process Tank includes:

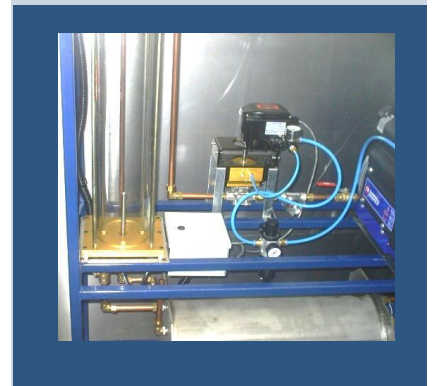
- Heater rod with integrated temperature sensor
- Input and output hand valves
- Level transmitter
- Ruler centimeters & inches
- Pressure transmitter with analog pressure meter

Stainless Steel Reservoir Tank includes:

- Drain hand valve
- Sensor low-level tank safety
- Exhaust valve
- Circulation Pump

Control Panel and components includes:

- 3 controllers (P,PI,PID&digital)for temperature, level&flow and pressure
- Speed control pump
- Screen Monitor
- Proportional valve
- Air compressor
- Flow transmitter
- Input and output ON/OFF valves pressure
- Open/Close Loop





Description



Divers Machinery's Bench Control Process Trainer is an instructive set that simulate the industrial process based on control and instrumentation.

The complete combined, self-sufficient training device gives a complete range of process control testing.

Using water or any non-flammable liquid (glycol) as the waged fluid, the equipment is dummy-proof, real-world experiments on control of flow, level, temperature and pressure. Learners can study each of these distinctly or in groupings.

The testing unit includes all the essential components to allow learners to create process control systems.

The main part is the process tank, a heater with temperature sensor, level, pressure sensors, pressure valves and liquid circulation with manual valves.

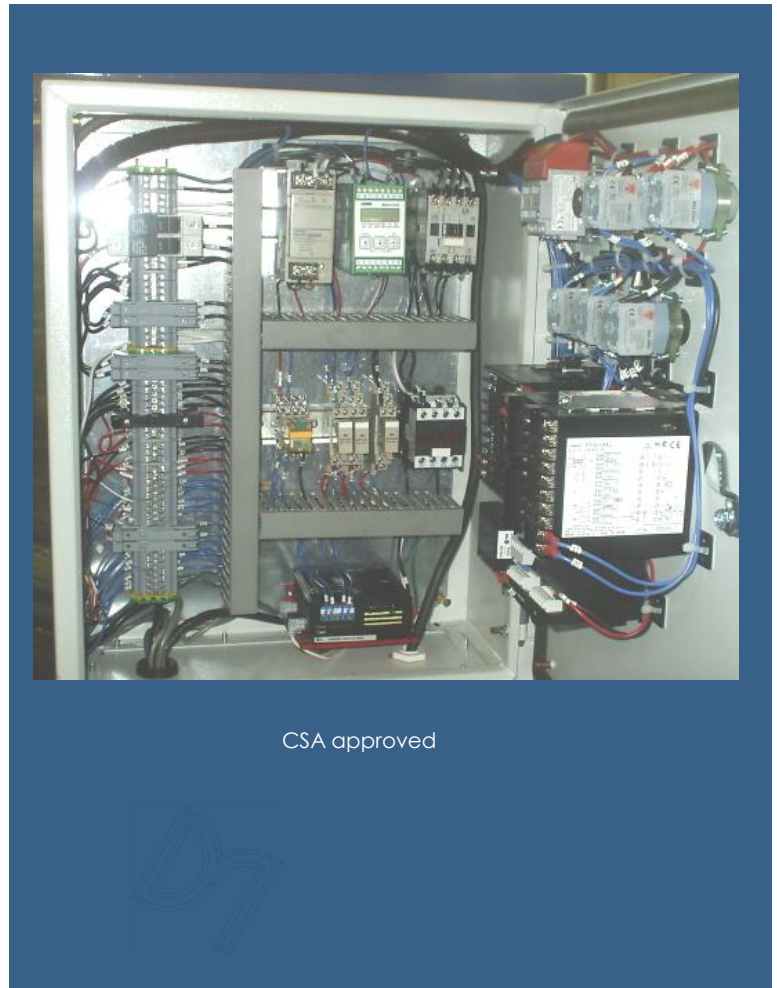


It also includes two loops, linked by the proportional valve input of the process vessel. One loop is the level loop with its transmitter. The other loop is the flow with its flow transmitter.

The control panel links to the test unit to provide access to the connections of each part of the system.

It includes a monitoring screen with switches and controls to allow manual control of pump speed, level control, flow control, temperature control and pressure.

Furthermore, the user can connect a suitable external controller, such as a computer with connection RS-232.



CSA approved



Divers Machinery Inc.

11410, 6ave Montreal, QC
Canada H1E 1R9

Phone:

(514) 979-3554

Fax:

(514) 387-4041

E-Mail:

info@diversmachineryinc.com

Web Site:

www.diversmachineryinc.com

Divers Machinery Inc.

Features

- Comprehensive User guide
- 1 years warranty
- CSA approved

Experiments

- Control of flow
- Control of level
- Control of pressure
- Control of temperature
- Simple or combined loops
- Monitoring of the loops

Power source

- 240 VAC- neutral , 60 Hz at approx. 15A

*For more information or question
please visit us at*

www.diversmachineryinc.com

or

email us at

info@diversmachineryinc.com

Operating environment

- +5 °C to +30 °C